



Solutions for Hotel



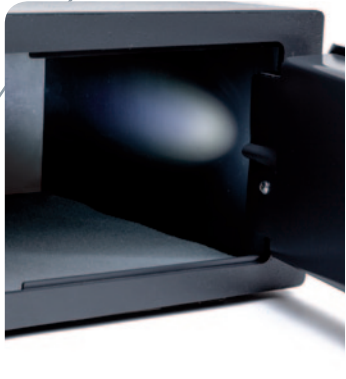
Laser cut for maximum security



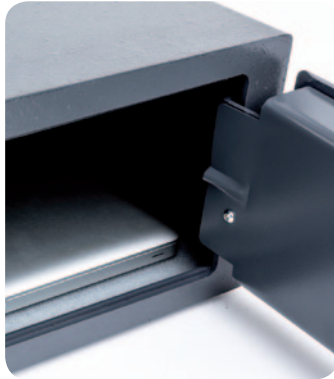
Easy of Use - Operation graphics and ADA compliant Keypad



Audit trail



Automatic interior light



Laptop storage due to the 90° opening giving maximum clearance



Emergency override

Hotel safe

Made in Italy

Laser cut - attack resistant.

Easy to use - the distinct keypad and display guide make it simple to understand.

Audit trail - traces the previous 300 events and stores them directly to an SD card. CISA also provides an online procedure which authenticates and verifies the integrity of the audit trail file.

Automatic interior LED lighting.

ADA-compliant keypad (Americans with Disabilities Act), to help blind guests.

Easy to place a 14" laptop inside thanks to the 90° door opening and cantilevered hinges which give maximum door clearance.

"Master code" staff opening, allows authorised staff to open the safe when guests forget the code.

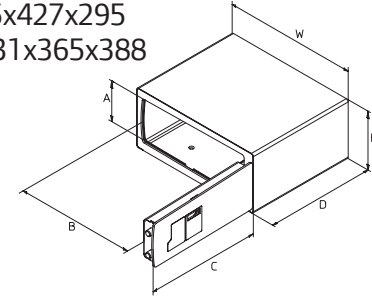
Motorised lock with low power consumption (8000 open-close cycles), for automatic door opening.

Emergency mechanical override, the safe can be opened with a mechanical override key (C2000 or AP3 S). For maximum security, the key can only open and not re-lock the safe.

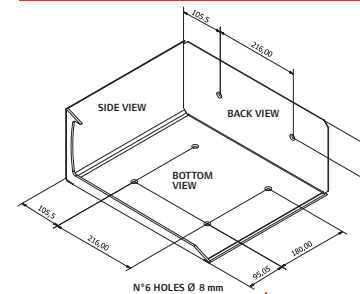


Dimensions

- Outside H/W/D (mm): 190x430x350
- Inside H/W/D (mm): 185x427x295
- Opening A/B/C (mm): 131x365x388
- Volume (dm³): 24
- Weight (kg): 11,6
- Wall thickness (mm): 1,5
- Door thickness (mm): 5



Fixing holes



Standard

- 4 x AARL6 batteries supplied (8000 open-close cycles)
- Interior carpet
- C2000 emergency key

Upon request

- Internal power socket
- Left hand opening
- CISA AP3 S patented emergency key

Finishes



- Standard: Dark grey "Graphite" (RAL 7015)
- Upon request: Light grey "Silicon" (RAL 7032)

Certifications

- EN 55022; CEI EN 61000-6-3
- CEI EN 61000-6-1
- IEC 1000-4-2



CISA is a brand of Ingersoll Rand. Ingersoll Rand (NYSE: IR) advances the quality of life by creating and sustaining safe, comfortable and efficient environments. Our people and our family of brands work together to enhance the quality and comfort of air in homes and buildings; transport and protect food and perishables; secure homes and commercial properties; and increase industrial productivity and efficiency. We are a \$14 billion global business committed to a world of sustainable progress and enduring results.

CISA SpA
Via Oberdan, 42
48018 Faenza (RA) Italy
Tel. +39 0546 677111
Fax +39 0546 677150
www.cisa.com
www.cisahotels.com

www.ingersollrand.com



@CISALocks



youtube.com/CISAmkt



Watch the video!

